



TWBA-2-0006G-T

1:2Balun

0.5 ~ 6000MHz

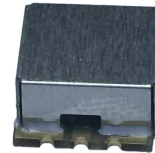
V1

Features:

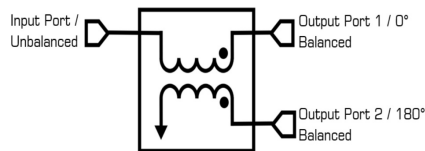
RoHS Compliant

Tape & Reel

260 Degree Cel SMT Process



Schematic:



Ports Configuration:

| | |
|-----------------|------------------|
| SUM PORT | 2 |
| PORT1 | 5 |
| PORT2 | 7 |
| GROUND | 1,3,4,6,8 |

Maximum Ratings:

| Parameters | Conditions | Unit | Min | Max |
|-----------------------------|------------|------------|-----|-----|
| RF Power | | Watt | | 1 |
| DC Current | | mA | | 30 |
| Operating Temperature Range | | Degree Cel | -20 | 85 |
| Storage Temperature Range | | Degree Cel | -55 | 100 |
| Moisture Sensitivity Level | | | | 1 |

Ordering Information:

| Part Description | Details |
|--------------------|-------------------------------------|
| TWBA-2-0006G-T | 800 per reel |
| TWBA-2-0006G-T-EVA | Evaluation Board for TWBA-2-0006G-T |

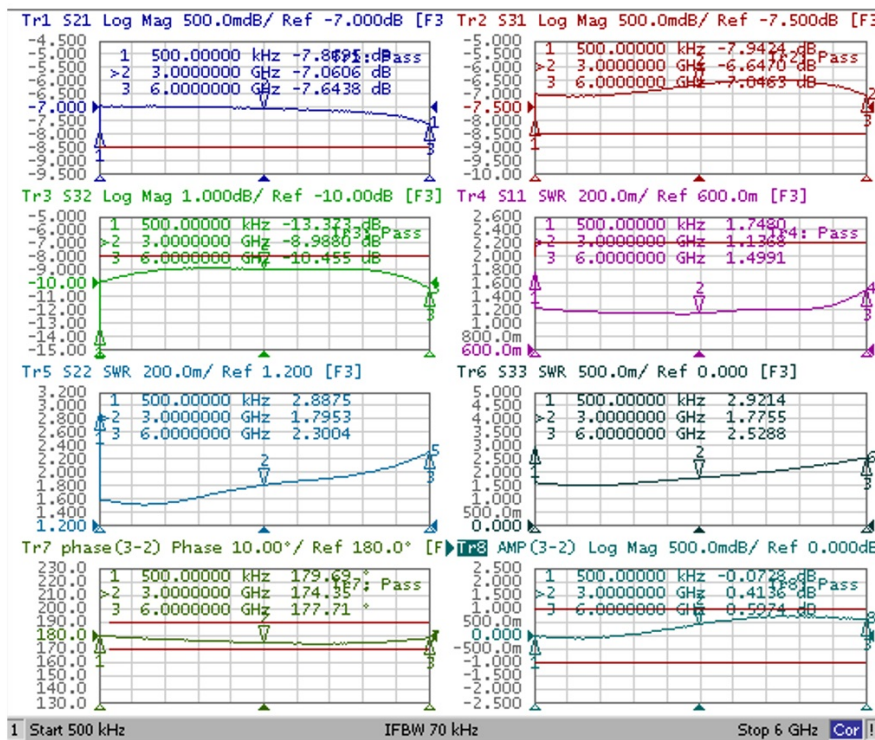
Electrical Specifications: Zo=50 Ohm Pin = 0 dBm

| Parameter | Test Conditions | Unit | Min | Typical | Max |
|------------------------|-----------------|------|------|---------|------|
| Frequency Range | - | MHz | 0.5 | ~ | 6000 |
| Nominal Insertion loss | 0.5-6000Mhz | dB | - | 6 | - |
| Nominal Phase Shift | 0.5-6000Mhz | ° | - | 180 | - |
| Insertion Loss | 0.5-6000Mhz | dB | - | 1.6 | 2.6 |
| Input return loss | 0.5-6000Mhz | dB | - | 1.8 | 2.2 |
| Amplitude Balance | 0.5-6000Mhz | dB | -1.2 | 0.6 | 1.2 |
| Phase Balance | 0.5-6000Mhz | ° | -10 | 3 | 10 |
| Isolation | 0.5-6000Mhz | dB | 8 | 9 | - |

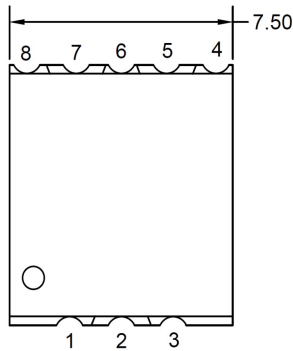
Notes:

- 1: Specifications guaranteed over the operating temperature range.
- 2: Touchstone format sNp file is available on www.exploremw.com.

Typical Performance Curves:



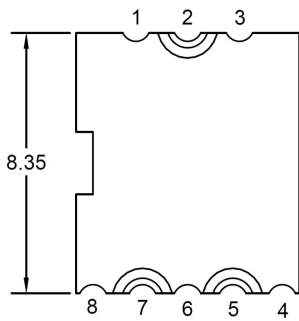
Mechanical Dimensions:



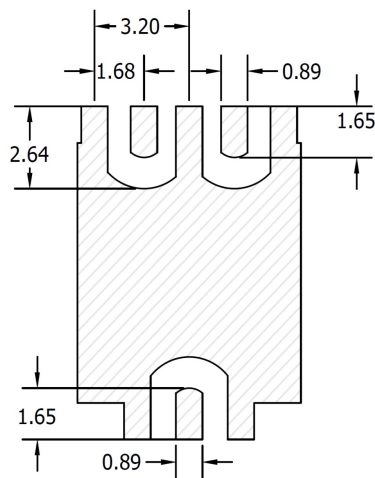
TOP VIEW



SIDE VIEW



BOTTOM VIEW



FOOTPRINT FOR PCB

Notes:

- 1: Dimensions in mm.
- 2: Tolerance $\pm 0.3\text{mm}$ unless otherwise noted.
- 3: 3D model in STEP format is available at www.exploremw.com