



## TWGF10972

4 WAY-0° Power splitter

10 ~ 700MHz

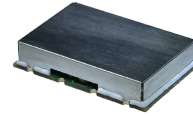
## V1

### Features:

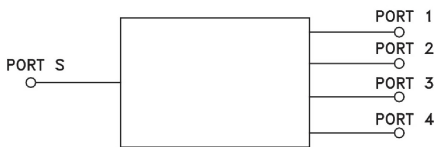
RoHS Compliant

Tape & Reel

260 Degree Cel SMT Process



### Schematic:



### Ports Configuration:

SUM PORT	7
PORT1	1
PORT2	2
PORT3	3
PORT4	4
GROUND	5,6,8

### Maximum Ratings:

Parameters	Conditions	Unit	Min	Max
RF Power		Watt		10
DC Current		mA		500
Operating Temperature Range		Degree Cel	-40	85
Storage Temperature Range		Degree Cel	-55	100
Moisture Sensitivity Level				1

### Ordering Information:

Part Description	Details
TWGF10972	500 per reel
TWGF10972-EVA	Evaluation Board for TWGF10972

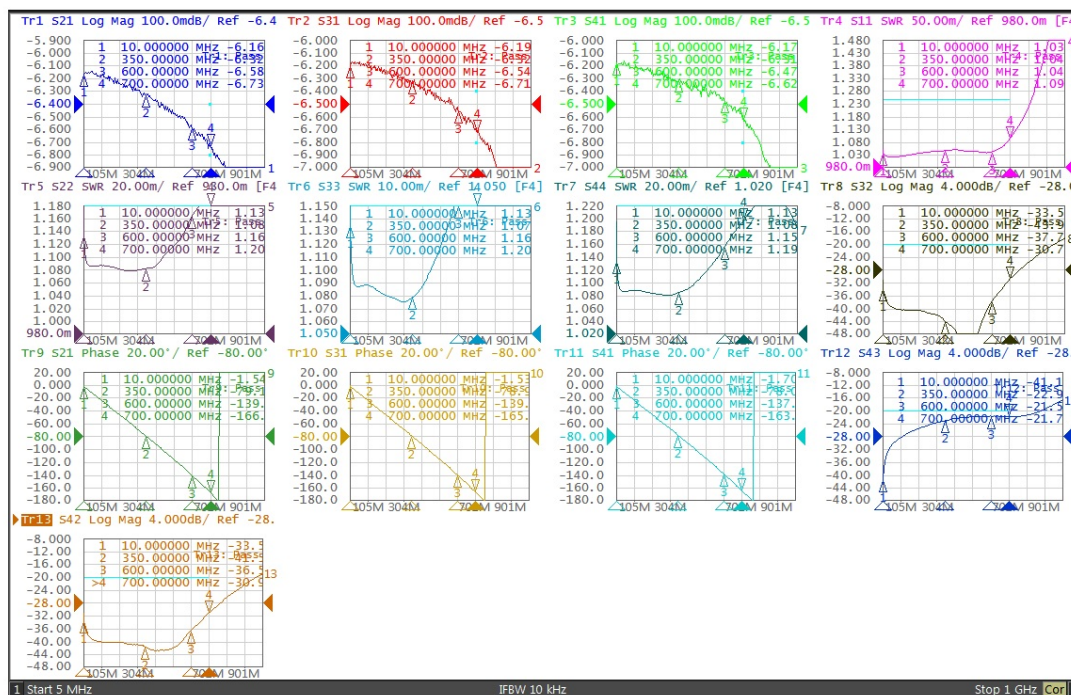
Electrical Specifications: Zo=50 Ohm Pin = 0 dBm

Parameter	Test Conditions	Unit	Min	Typical	Max
Frequency Range	-	MHz	10	~	700
Insertion Loss	10-700MHz	dB	-	0.7	1
Amplitude unbalance	10-700MHz	dB	-	0.1	0.4
Phase unbalance	10-700MHz	°	-	1	8
Input VSWR	10-700MHz	VSWR	-	1.1	1.25
Output VSWR	10-700MHz	VSWR	-	1.2	1.35
Isolation	10-700MHz	dB	20	30	-

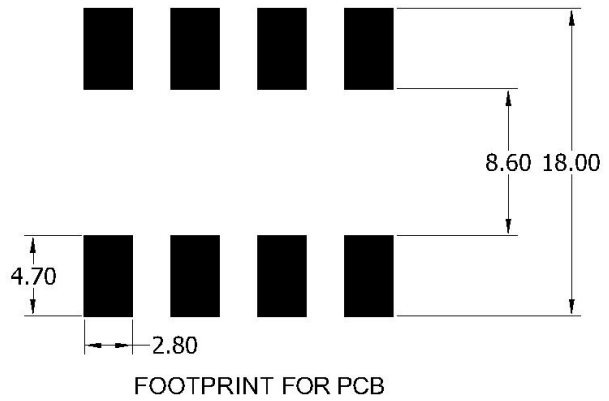
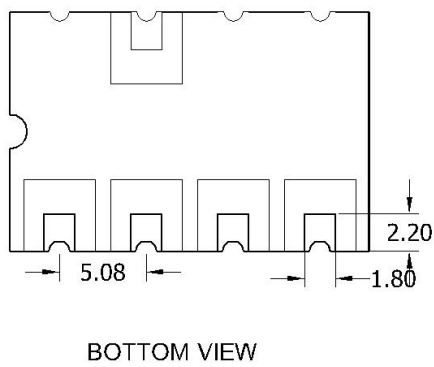
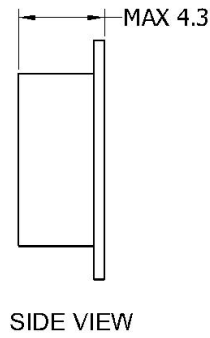
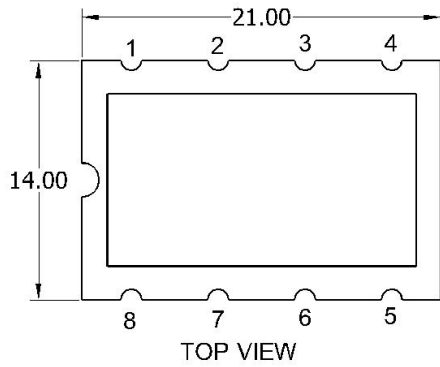
Notes:

- 1: Specifications guaranteed over the operating temperature range.
- 2: Touchstone format sNp file is available on [www.exploremw.com](http://www.exploremw.com).

Typical Performance Curves:



**Mechanical Dimensions:**



**Notes:**

- 1: Dimensions in mm.
- 2: Tolerance  $\pm 0.3$ mm unless otherwise noted.
- 3: 3D model in STEP format is available at [www.exploremw.com](http://www.exploremw.com)