



TWGF11017

3 WAY-0° Power splitter

50 ~ 750MHz

V1

Features:

RoHS Compliant

Tape & Reel

260 Degree Cel SMT Process



Schematic:



Ports Configuration:

SUM PORT	1
PORT 1	6
PORT 2	4
PORT 3	3
GROUND	2,5

Maximum Ratings:

Parameters	Conditions	Unit	Min	Max
RF Power		Watt		1
DC Current		mA		500
Operating Temperature Range		Degree Cel	-40	85
Storage Temperature Range		Degree Cel	-55	100
Moisture Sensitivity Level				1

Ordering Information:

Part Description	Details
TWGF11017	800 per reel
TWGF11017-EVA	Evaluation Board for TWGF11017

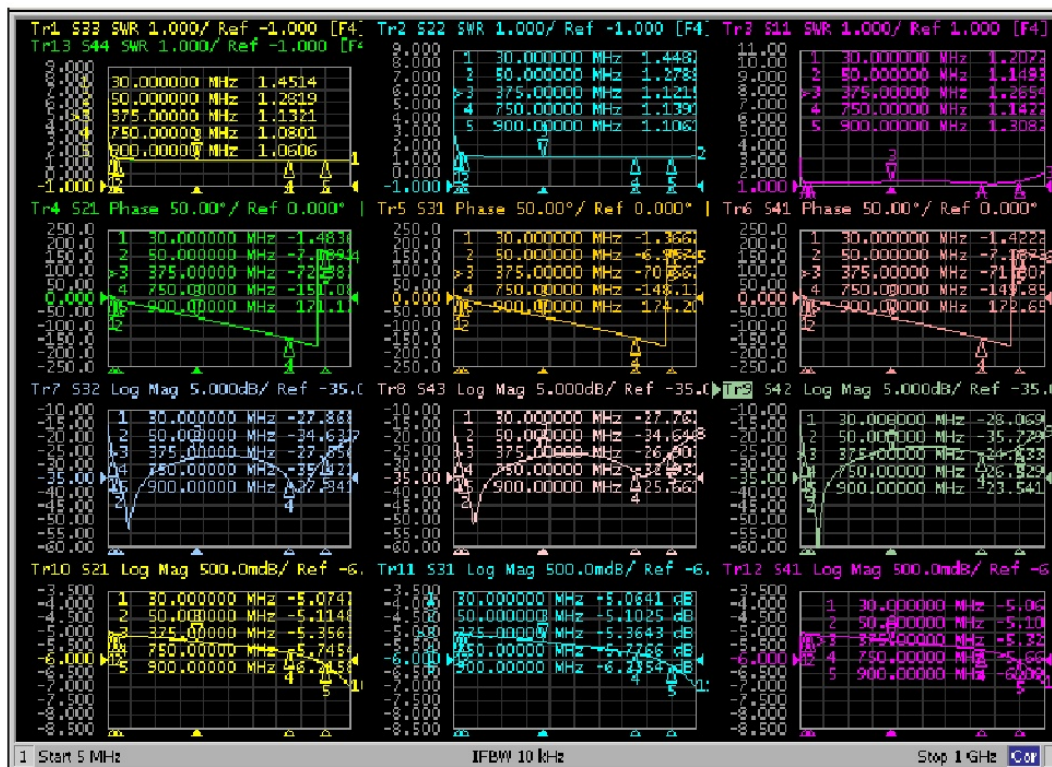
Electrical Specifications: Zo=50 Ohm Pin = 0 dBm

Parameter	Test Conditions	Unit	Min	Typical	Max
Frequency Range	-	MHz	50	~	750
Insertion Loss	5-300Mhz	dB	-	0.9	1.3
Amplitude unbalance	5-300Mhz	dB	-	0.1	0.6
Phase unbalance	5-300Mhz	°	-	1	6
Input VSWR	5-300Mhz	VSWR	-	1.25	1.35
Output VSWR	5-300Mhz	VSWR	-	1.25	1.4
Isolation	5-300Mhz	dB	20	26	-

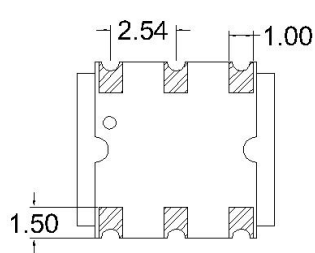
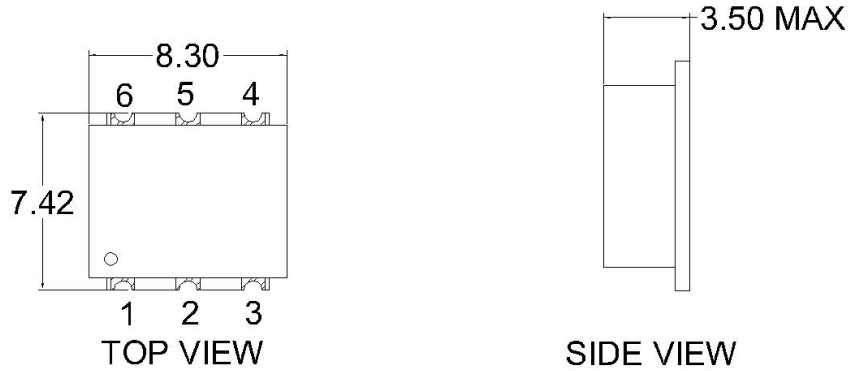
Notes:

- 1: Specifications guaranteed over the operating temperature range.
- 2: Touchstone format sNp file is available on www.exploremw.com.

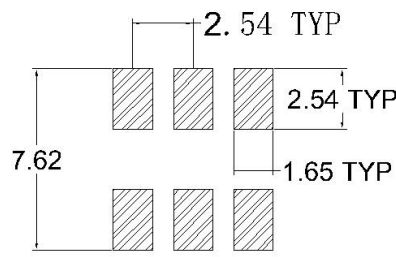
Typical Performance Curves:



Mechanical Dimensions:



BOTTOM VIEW



FOOTPRINT FOR PCB

Notes:

- 1: Dimensions in mm.
- 2: Tolerance ± 0.3 mm unless otherwise noted.
- 3: 3D model in STEP format is available at www.exploremw.com